



MULTIFUNCTION MULTIMETERS AND ENERGY METER EMM-ELM-EMC-EMT

ELECTRICAL MULTIFUNCTION ANALYSERS

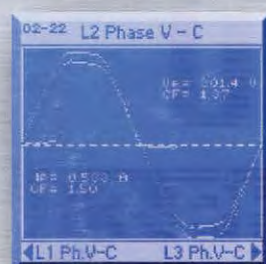
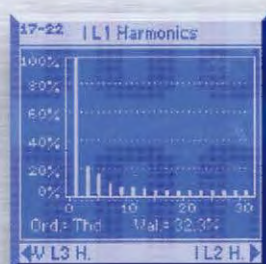
EMA

ACCESSORIES

EMI

SOFTWARE

NRG



PRODUCT

EMM - ELM - EMC - EMT
MULTIFUNCTION MULTIMETERS AND ENERGY METER**DIN RAIL MOUNTING 3 MODULES**

EMM-μD3VA	Voltmeter - Ammeter
EMM-μD3h	Multifunction multimeter basic version
EMM-μD3hp	Additional digital output
EMM-μD3h-485	Additional serial output RS485 MODBUS-RTU

DIN RAIL MOUNTING 6 MODULES

EMM-D1-485	Multifunction multimeter single-phase with internal CT with digital output and serial output RS485 MODBUS-RTU
EMM-D1-P	Energy counter single-phase with internal CT with digital outputs and serial output RS485 MODBUS-RTU
EMM-D4h (t)	Multifunction multimeter basic version
EMM-D4hp (t)	Additional digital outputs
EMM-D4hp485 (t)	Additional digital outputs and serial output RS485 MODBUS-RTU (or LONWORK)
EMM-D4hp-485-A (t)	Additional digital outputs, serial output RS485 MODBUS-RTU (or LONWORK) and analog output 0-4÷20 mA
EMM-D4hp-ETH (t)	Additional digital outputs and ethernet output

FLUSH MOUNTING DIN 72X72 mm

EMM-μ3VA (t)	Voltmeter - Ammeter
EMM-μ4h (t)	Multifunction multimeter basic version
EMM-μ4hp (t)	Additional digital output
EMM-μ4h-485 (t)	Additional serial output RS485 MODBUS-RTU

FLUSH MOUNTING 96x96 mm WITH REDUCED DEPTH

EMM-R3VA (t)	Voltmeter - Ammeter
EMM-R4h (t)	Multifunctional multimeter basic version in reduced depth's container
EMM-R4hp (t)	Additional digital outputs
EMM-R4h-485 (t)	Additional serial output RS485 MODBUS-RTU

FLUSH MOUNTING DIN 96x96 mm

EMM-4h (t)	Multifunctional multimeter basic version
EMM-4hp (t)	Additional digital output
EMM-4hp485 (t)	Additional digital outputs and serial output RS485 MODBUS-RTU (or LONWORK)
EMM-4hp-PF (t)	Additional digital outputs and serial output PROFIBUS-DP
EMM-4hp-485-A (t)	Additional digital outputs, serial output RS 485 MODBUS-RTU (or LONWORK) and analog output 0-4÷20mA
EMM-4hp-ETH (t)	Additional digital outputs, ethernet output

ELM-4	Multifunctional ammeter basic version
ELM-4-485	Additional serial output RS 485 MODBUS-RTU (or LONWORK)
ELM-4-PF	Additional serial output PROFIBUS-DP

EMC-3B (t)	Energy counter basic version (with energy counters with double tariff and digital outputs)
EMC-3B485 (t)	Additional serial output RS485 MODBUS-RTU

DIN RAIL MOUNTING 6 MODULES

EMC-D3B (t)	Energy counter basic version (with energy counters with double tariff and digital outputs)
EMC-D3B485 (t)	Additional serial output RS485 MODBUS-RTU

EMT-3S	Measure transducer basic version (with serial output and digital output)
EMT-3I	Additional digital input
EMT-3A	Additional analog output

The "t" reference is for isolated inputs current.

SELECTION TABLE OF FUNCTION AND TECHNICAL CHARACTERISTICS**EMA**
ELECTRICAL PARAMETER ANALYSER**FLUSH MOUNTING DIN 96x96 mm****RED LED DISPLAY**

EMA-96	Analyser basic version with red LED alphanumeric display
EMA-96H	Additional harmonic analysis and energy counters subdivided in time bands

LCD DISPLAY

EMA-90	Analyser basic version, LCD graphic display 50x50 mm
EMA-90H	Additional harmonic analysis and energy counters subdivided in time bands

FLUSH MOUNTING DIN 144x144 mm**RED LED DISPLAY**

EMA-14	Analyser basic version with red LED alphanumeric display
EMA-14H	Additional harmonic analysis and energy counters subdivided in time bands

GRAPHIC LCD DISPLAY

EMA-10	Analyser basic version, LCD 50x50 mm graphic display
EMA-10H	Additional harmonic analysis and energy counters subdivided in time bands

WIDE GRAPHIC LCD DISPLAY

EMA-11	Analyser basic version, LCD 70x70 mm graphic display
EMA-11H	Additional harmonic analysis and energy counters subdivided in time bands

DIN RAIL MOUNTING 9 MODULES

EMA-D9	Analyser basic version, LCD alphanumeric display
EMA-D9H	Additional harmonic analysis and energy counters subdivided in time bands

SELECTION TABLE OF FUNCTION AND TECHNICAL CHARACTERISTICS**OPTION**

FUNCTION EXPANSION CARDS FOR ANALYSERS EMA96... - EMA90... - EMA9...

FUNCTION EXPANSION CARDS FOR ANALYSERS EMA14... - EMA10... - EMA11...

NRG SOFTWARE**EMI**
ACCESSORIES

EMM

MULTIFUNCTION MULTIMETER AND ENERGY METER



EMM

MULTIFUNCTION MULTIMETERS DIN RAIL 3 MODULES

ENVIRONMENTAL WORKING CHARACTERISTICS

Working T: $-5 \div +50^{\circ}\text{C}$
Storage T: $-15 \div +60^{\circ}\text{C}$
Humidity: $\leq 90\%$

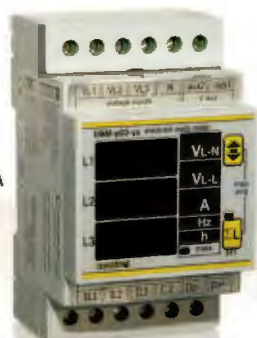
STANDARDS/ REGULATION

Safety: 61010-1:2001
EMC: EN61000-6-2 / EN61000-6-4
CISPR22-EN55022

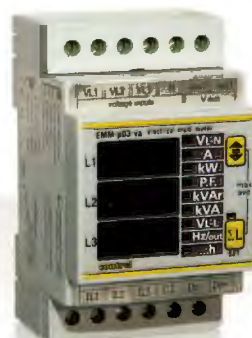
ELECTRICAL COMPATIBILITY CE

Energy: EN61036:1996

EMM- μ D3VA



EMM- μ D3h
EMM- μ D3h-p
EMM- μ D3h-485



EMM

MULTIFUNCTION MULTIMETERS AND METERS FOR SINGLE-PHASE NETWORK FOR USE IN SINGLE-PHASE NETWORK WITH CURRENTS UP TO 63 A (INTERNAL CT) DIN RAIL 6 MODULES

ENVIRONMENTAL WORKING CHARACTERISTICS

Working T: $-5 \div +50^{\circ}\text{C}$

Storage T: $-15 \div +60^{\circ}\text{C}$

Humidity: $\leq 90\%$

STANDARDS/ REGULATION

Safety: 61010-1:2001

EMC: EN61000-6-2 / EN61000-6-4

CISPR22-EN55022

ELECTRICAL COMPATIBILITY CE

Energy: EN61036:1996



EMM D1-485
EMM-D1-p

EMM

MULTIFUNCTION MULTIMETERS DIN RAIL 6 MODULES

ENVIRONMENTAL WORKING CHARACTERISTICS

Working T: $-5 \div +50^{\circ}\text{C}$

Storage T: $-15 \div +60^{\circ}\text{C}$

Humidity: $\leq 90\%$

STANDARDS/ REGULATION

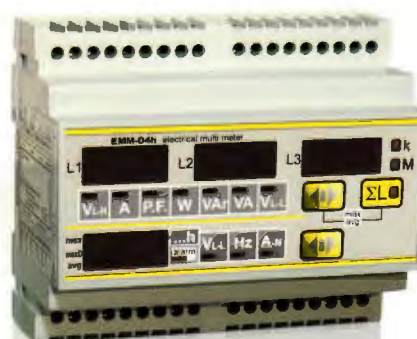
Safety: 61010-1:2001

EMC: EN61000-6-2 / EN61000-6-4

CISPR22-EN55022

ELECTRICAL COMPATIBILITY CE

Energy: EN61036:1996



EMM-D4..
EMM-D4hp
EMM-D4hp-485
EMM-D4hp-485-A
EMM-D4hp-ETH

EMM

MULTIFUNCTION MULTIMETERS FLUSH MOUNTING DIN 72 x 72

ENVIRONMENTAL WORKING CHARACTERISTICS

Working T: $-5 \div +50^{\circ}\text{C}$
Storage T: $-15 \div +60^{\circ}\text{C}$
Humidity: $\leq 90\%$

STANDARDS/ REGULATION

Safety: 61010-1:2001
EMC: EN61000-6-2 / EN61000-6-4
CISPR22-EN55022

ELECTRICAL COMPATIBILITY CE

Energy: EN61036:1996



EMM-μ3VA

EMM μ4h
EMM μ4hp
EMM μ4h-485

EMM

MULTIFUNCTION MULTIMETERS FLUSH MOUNTING DIN 96 x 96 WITH REDUCED DEPTH

ENVIRONMENTAL WORKING CHARACTERISTICS

Working T: $-5 \div +50^{\circ}\text{C}$
Storage T: $-15 \div +60^{\circ}\text{C}$
Humidity: $\leq 90\%$

STANDARDS/ REGULATION

Safety: 61010-1:2001
EMC: EN61000-6-2 / EN61000-6-4
CISPR22-EN55022

ELECTRICAL COMPATIBILITY CE

Energy: EN61036:1996



EMM-R3VA

EMM-R4h
EMM-R4hp
EMM-R4h-485

EMM

MULTIFUNCTION MULTIMETERS FLUSH MOUNTING DIN 96 x 96

ENVIRONMENTAL WORKING CHARACTERISTICS

Working T: $-5 \div +50^{\circ}\text{C}$
Storage T: $-15 \div +60^{\circ}\text{C}$
Humidity: $\leq 90\%$

STANDARDS/ REGULATION

Safety: 61010-1:2001
EMC: EN61000-6-2 / EN61000-6-4
CISPR22-EN55022

ELECTRICAL COMPATIBILITY CE

Energy: EN61036:1996



EMM-4h
EMM-4hp
EMM-4h-485
EMM-4hp-PF
EMM-4h-485-A
EMM-4hp-ETH

ELM

MULTIFUNCTIONAL AMMETER MEASURING NETWORK'S CURRENT OR DIFFERENTIALS FLUSH MOUNTING DIN 96 x 96

These could be used for measuring differential or residual currents (up to 4 simultaneously) with an external toroidal reducer or for measuring networks current (eventually also networks divided each other, up to 4 simultaneously) with external CT.



ELM-4
ELM-4-485
ELM 4-PF

ENVIRONMENTAL WORKING CHARACTERISTICS

Working T: $-5 \div +50^{\circ}\text{C}$

Storage T: $-15 \div +60^{\circ}\text{C}$

Humidity: $\leq 90\%$

STANDARDS/ REGULATION

Safety: 61010-1:2001

EMC: EN61000-6-2 / EN61000-6-4

CISPR22-EN55022

ELECTRICAL COMPATIBILITY CE

EMC

ENERGY METER FLUSH MOUNTING DIN 96 x 96 DIN RAIL 6 MODULES



EMC-D3B
EMC-D3B-485

ENVIRONMENTAL WORKING CHARACTERISTICS

Working T: $-5 \div +50^{\circ}\text{C}$

Storage T: $-15 \div +60^{\circ}\text{C}$

Humidity: $\leq 90\%$

STANDARDS/ REGULATION

Safety: 61010-1:2001

EMC: EN61000-6-2 / EN61000-6-4

CISPR22-EN55022

ELECTRICAL COMPATIBILITY CE

Energy: EN61036:1996

EMC-3B
EMC-3B-485

EMT

MULTIFUNCTIONAL TRANSDUCER DIN RAIL WITHOUT VISUALIZATION



EMT-3S
EMT-3SI
EMT-3SA

ENVIRONMENTAL WORKING CHARACTERISTICS

Working T: $-5 \div +50^{\circ}\text{C}$

Storage T: $-15 \div +60^{\circ}\text{C}$

Humidity: $\leq 90\%$

STANDARDS/ REGULATION

Safety: 61010-1:2001

EMC: EN61000-6-2 / EN61000-6-4

CISPR22-EN55022

ELECTRICAL COMPATIBILITY CE

Energy: EN61036:1996

EMA

ELECTRICAL MULTIFUNCTION ANALYSERS



EMA

ELECTRICAL MULTIFUNCTION ANALYSERS FLUSH MOUNTING DIN 96 x 96 - RED LED DISPLAY

ENVIRONMENTAL WORKING CHARACTERISTICS

Working T: $-5 \div +50^{\circ}\text{C}$
Storage T: $-15 \div +60^{\circ}\text{C}$
Humidity: $\leq 90\%$

STANDARDS/ REGULATION

Safety: 61010-1:2001
EMC: EN61000-6-2
EN61000-6-4
CISPR22-EN55022

ELECTRICAL COMPATIBILITY CE

Energy: EN61036:1996



EMA-96
EMA-96 H

EMA

ELECTRICAL MULTIFUNCTION ANALYSERS FLUSH MOUNTING DIN 96 x 96 - LCD DISPLAY

ENVIRONMENTAL WORKING CHARACTERISTICS

Working T: $-5 \div +50^{\circ}\text{C}$
Storage T: $-15 \div +60^{\circ}\text{C}$
Humidity: $\leq 90\%$

STANDARDS/ REGULATION

Safety: 61010-1:2001
EMC: EN61000-6-2
EN61000-6-4
CISPR22-EN55022

ELECTRICAL COMPATIBILITY CE

Energy: EN61036:1996



EMA-90



EMA-90 H

EMA

ELECTRICAL MULTIFUNCTION ANALYSERS FLUSH MOUNTING DIN 144 x 144 - RED LED DISPLAY

ENVIRONMENTAL WORKING CHARACTERISTICS

Working T: $-5 \div +50^{\circ}\text{C}$
Storage T: $-15 \div +60^{\circ}\text{C}$
Humidity: $\leq 90\%$

STANDARDS/ REGULATION

Safety: 61010-1:2001
EMC: EN61000-6-2
EN61000-6-4
CISPR22-EN55022

ELECTRICAL COMPATIBILITY CE

Energy: EN61036:1996



EMA-14
EMA-14 H

EMA

ELECTRICAL MULTIFUNCTION ANALYSERS FLUSH MOUNTING DIN 144 x 144 - LCD DISPLAY

ENVIRONMENTAL WORKING CHARACTERISTICS

Working T: $-5 \div +50^{\circ}\text{C}$
Storage T: $-15 \div +60^{\circ}\text{C}$
Humidity: $\leq 90\%$

STANDARDS/ REGULATION

Safety: 61010-1:2001
EMC: EN61000-6-2
EN61000-6-4
CISPR22-EN55022

ELECTRICAL COMPATIBILITY CE

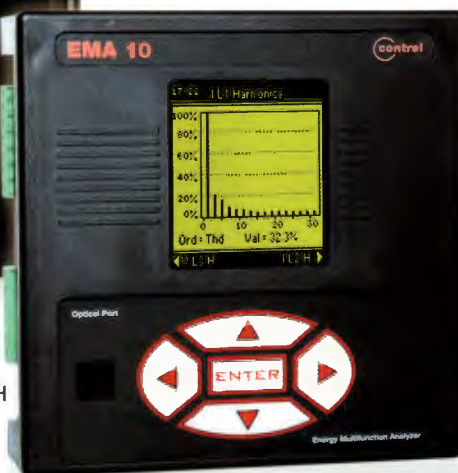
Energy: EN61036:1996



EMA-10



EMA-10 H



EMA

ELECTRICAL MULTIFUNCTION ANALYSERS FLUSH MOUNTING DIN 144 x 144 - WIDE LCD DISPLAY

ENVIRONMENTAL WORKING CHARACTERISTICS

Working T: $-5 \div +50^{\circ}\text{C}$
Storage T: $-15 \div +60^{\circ}\text{C}$
Humidity: $\leq 90\%$

STANDARDS/ REGULATION

Safety: 61010-1:2001
EMC: EN61000-6-2
EN61000-6-4
CISPR22-EN55022

ELECTRICAL COMPATIBILITY CE

Energy: EN61036:1996



EMA

ELECTRICAL MULTIFUNCTION ANALYSERS FLUSH MOUNTING DIN RAIL 9 MODULES

ENVIRONMENTAL WORKING CHARACTERISTICS

Working T: $-5 \div +50^{\circ}\text{C}$
Storage T: $-15 \div +60^{\circ}\text{C}$
Humidity: $\leq 90\%$

STANDARDS/ REGULATION

Safety: 61010-1:2001
EMC: EN61000-6-2
EN61000-6-4
CISPR22-EN55022

ELECTRICAL COMPATIBILITY CE

Energy: EN61036:1996

